



**Weyn-Lauwers** N.V.

Industriepark-Noord 12  
B - 9100 SINT-NIKLAAS

Tel. : 00 32 (0)3 776.34.13  
Fax : 00 32 (0)3 778.09.52  
weynlauwers@weynlauwers.be  
www.weynlauwers.be

**ANGLE SEAT  
CHECK VALVE  
BSP - AISI 316  
FIG 719**

**DESIGN FEATURES**

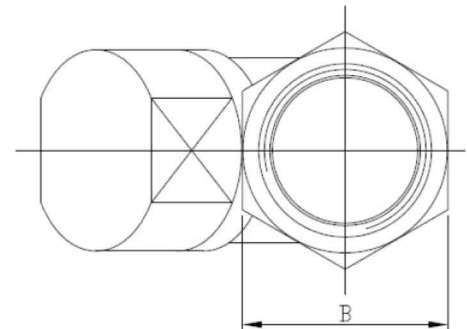
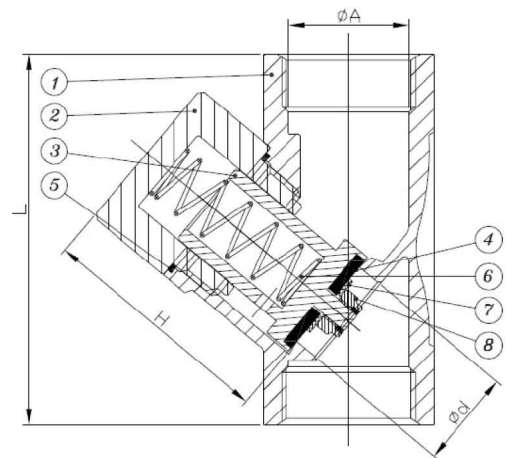
- angle seat check valve 1/4"-2" PN40
- threaded BSP
- min. temp : -20°C
- max. temp : +200°C
- specifications :     angel seat Y-type  
                              female/female  
                              spring leaded

**USE**

- for all common fluids / for every mounting position
- max. pressure :     40 bar

**MATERIALS**

item	Part name	Material
1	body	SS316 CF8M
2	cap	SS316 CF8M
3	disc	SS 316
4	seal	PTFE
5	gasket	PTFE
6	spring	SS 316
7	disc	SS 304
8	nut	SS 316



DN	1/4"	3/8"	1/2"	3/4"	1"	1 1/4"	1 1/2"	2"
L	66	66	66	76	90	110	121	152
A	11,7	14	17	23	29	38	44	56
B	27	27	27	32,3	41	50	55,5	70
d	11,6	12,5	12,5	18	23,5	31,4	35,7	45,5
H	34,4	34,4	34,4	44,6	56,9	64,2	76	87
open.press. bar	0,013	0,013	0,013	0,020	0,020	0,035	0,035	0,035
ref.	205392	205393	205394	205395	205396	205397	205398	205399